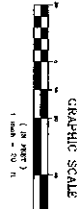


**SITE PAVING AND GRADING PLAN**  
SCALE 1"=25'

**CALL BEFORE YOU DIG!**  
 1-800-4-A-DIG  
 TOLL FREE  
 CONSTRUCTION PLANS AND TO BE  
 OBTAINED FROM THE CITY OF  
 GRAND RAPIDS, MI  
 Telephone: One Call System, Inc.  
 1-800-242-1776



- LEGEND**
- 1/2" Ø = EXISTING CURB
  - 1" Ø = EXISTING CURB
  - 1 1/2" Ø = EXISTING CURB
  - 2" Ø = EXISTING CURB
  - 3" Ø = EXISTING CURB
  - 4" Ø = EXISTING CURB
  - 5" Ø = EXISTING CURB
  - 6" Ø = EXISTING CURB
  - 8" Ø = EXISTING CURB
  - 10" Ø = EXISTING CURB
  - 12" Ø = EXISTING CURB
  - 14" Ø = EXISTING CURB
  - 16" Ø = EXISTING CURB
  - 18" Ø = EXISTING CURB
  - 20" Ø = EXISTING CURB
  - 24" Ø = EXISTING CURB
  - 30" Ø = EXISTING CURB
  - 36" Ø = EXISTING CURB
  - 42" Ø = EXISTING CURB
  - 48" Ø = EXISTING CURB
  - 54" Ø = EXISTING CURB
  - 60" Ø = EXISTING CURB
  - 66" Ø = EXISTING CURB
  - 72" Ø = EXISTING CURB
  - 78" Ø = EXISTING CURB
  - 84" Ø = EXISTING CURB
  - 90" Ø = EXISTING CURB
  - 96" Ø = EXISTING CURB
  - 102" Ø = EXISTING CURB
  - 108" Ø = EXISTING CURB
  - 114" Ø = EXISTING CURB
  - 120" Ø = EXISTING CURB
  - 126" Ø = EXISTING CURB
  - 132" Ø = EXISTING CURB
  - 138" Ø = EXISTING CURB
  - 144" Ø = EXISTING CURB
  - 150" Ø = EXISTING CURB
  - 156" Ø = EXISTING CURB
  - 162" Ø = EXISTING CURB
  - 168" Ø = EXISTING CURB
  - 174" Ø = EXISTING CURB
  - 180" Ø = EXISTING CURB



Project:	3/20/08
Date:	3/20/08
Drawn By:	WPU/CEN
Checked By:	SMU
Scale:	1" = 25'
Project:	C4

**familyVideo**  
 WEST CENTRAL AVENUE AND WASHINGTON STREET

**PROFESSIONAL ENGINEER**  
 Stewart W. Calkins  
 License No. 32300  
 State of Michigan  
 1150 North Wacker Drive  
 Grand Rapids, MI 49503  
 Tel: (616) 795-9800  
 Fax: (616) 795-0800  
 E-mail: scalkins@familyvideo.com

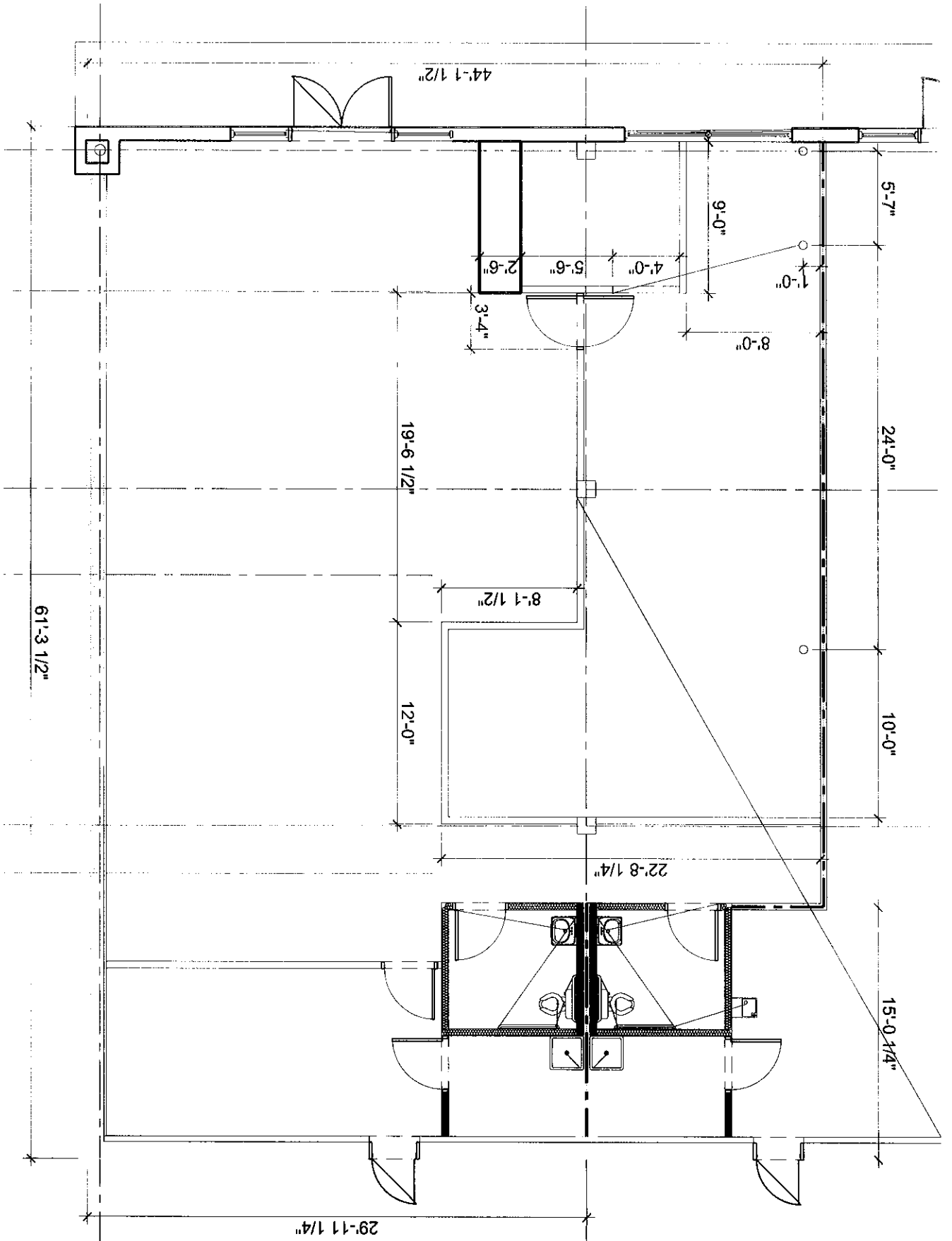
**REGISTERED PROFESSIONAL LANDSCAPE ARCHITECT**  
 David W. Calkins  
 License No. 32300  
 State of Michigan  
 1150 North Wacker Drive  
 Grand Rapids, MI 49503  
 Tel: (616) 795-9800  
 Fax: (616) 795-0800  
 E-mail: dcalkins@familyvideo.com

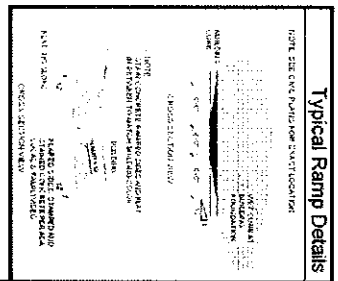
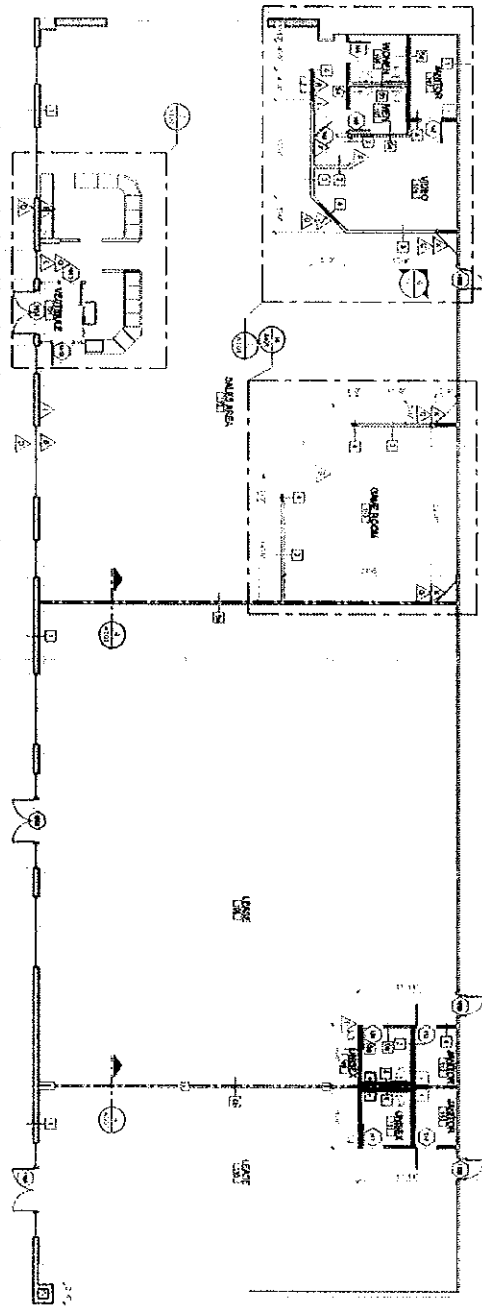
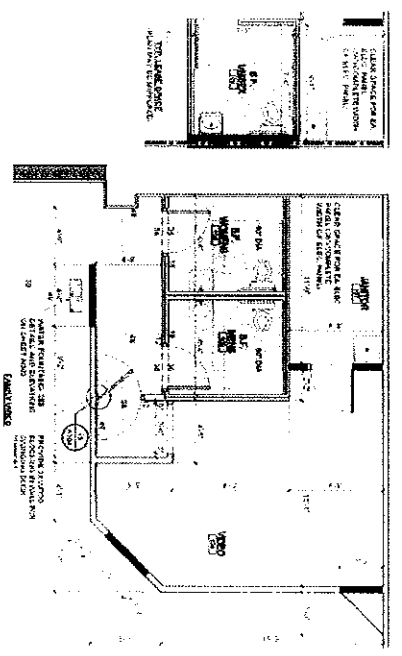
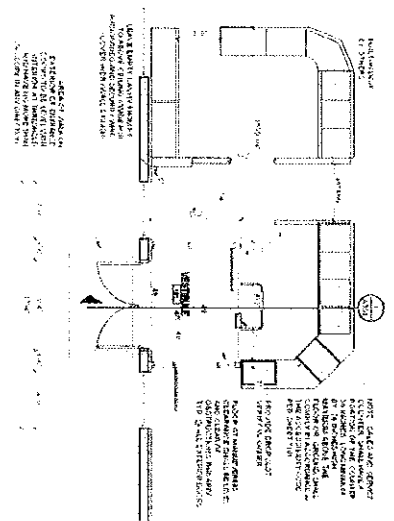
**familyVideo**  
 WEST CENTRAL AVENUE AND WASHINGTON STREET

**TITUSVILLE, PA**

**SITE PAVING AND GRADING PLAN**

**Rockford Construction**  
 5540 GLENWOOD HILLS PARKWAY, SE  
 GRAND RAPIDS, MICHIGAN 49512





ARCHITECTURAL FLOOR PLAN  
A101

Floor Plan Key Notes

- 1. ALL WORK SHALL BE IN ACCORDANCE WITH THE LATEST EDITIONS OF THE INTERNATIONAL BUILDING CODES AND ALL APPLICABLE LOCAL ORDINANCES.
- 2. ALL WORK SHALL BE IN ACCORDANCE WITH THE LATEST EDITIONS OF THE INTERNATIONAL MECHANICAL AND ELECTRICAL CODES AND ALL APPLICABLE LOCAL ORDINANCES.
- 3. ALL WORK SHALL BE IN ACCORDANCE WITH THE LATEST EDITIONS OF THE INTERNATIONAL PLUMBING AND MECHANICAL CODES AND ALL APPLICABLE LOCAL ORDINANCES.
- 4. ALL WORK SHALL BE IN ACCORDANCE WITH THE LATEST EDITIONS OF THE INTERNATIONAL ELECTRICAL CODES AND ALL APPLICABLE LOCAL ORDINANCES.
- 5. ALL WORK SHALL BE IN ACCORDANCE WITH THE LATEST EDITIONS OF THE INTERNATIONAL FIRE AND SAFETY CODES AND ALL APPLICABLE LOCAL ORDINANCES.
- 6. ALL WORK SHALL BE IN ACCORDANCE WITH THE LATEST EDITIONS OF THE INTERNATIONAL ENERGY EFFICIENCY CODES AND ALL APPLICABLE LOCAL ORDINANCES.
- 7. ALL WORK SHALL BE IN ACCORDANCE WITH THE LATEST EDITIONS OF THE INTERNATIONAL SUSTAINABLE DESIGN AND CONSTRUCTION CODES AND ALL APPLICABLE LOCAL ORDINANCES.
- 8. ALL WORK SHALL BE IN ACCORDANCE WITH THE LATEST EDITIONS OF THE INTERNATIONAL ACCESSIBILITY CODES AND ALL APPLICABLE LOCAL ORDINANCES.
- 9. ALL WORK SHALL BE IN ACCORDANCE WITH THE LATEST EDITIONS OF THE INTERNATIONAL SAFETY CODES AND ALL APPLICABLE LOCAL ORDINANCES.
- 10. ALL WORK SHALL BE IN ACCORDANCE WITH THE LATEST EDITIONS OF THE INTERNATIONAL QUALITY CODES AND ALL APPLICABLE LOCAL ORDINANCES.

Wall Types

- 1. 1/2" GYPSUM BOARD ON 2x4 STUDS
- 2. 5/8" GYPSUM BOARD ON 2x4 STUDS
- 3. 1" GYPSUM BOARD ON 2x4 STUDS
- 4. 1 1/2" GYPSUM BOARD ON 2x4 STUDS
- 5. 2" GYPSUM BOARD ON 2x4 STUDS
- 6. 1/2" GYPSUM BOARD ON 2x6 STUDS
- 7. 5/8" GYPSUM BOARD ON 2x6 STUDS
- 8. 1" GYPSUM BOARD ON 2x6 STUDS
- 9. 1 1/2" GYPSUM BOARD ON 2x6 STUDS
- 10. 2" GYPSUM BOARD ON 2x6 STUDS

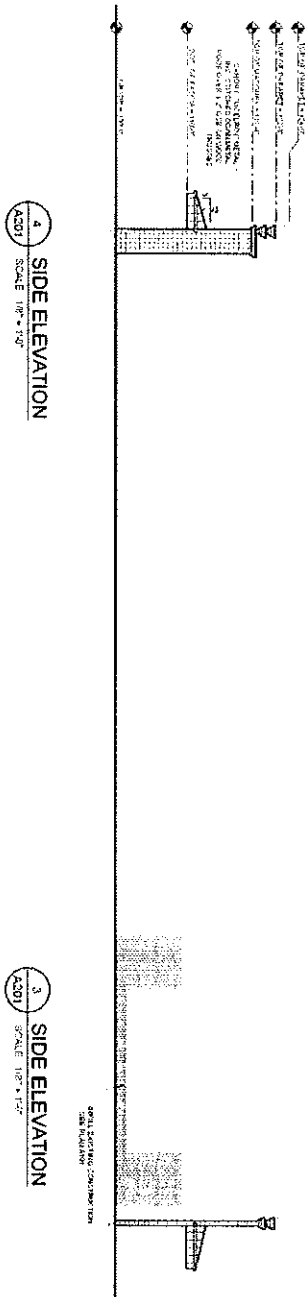
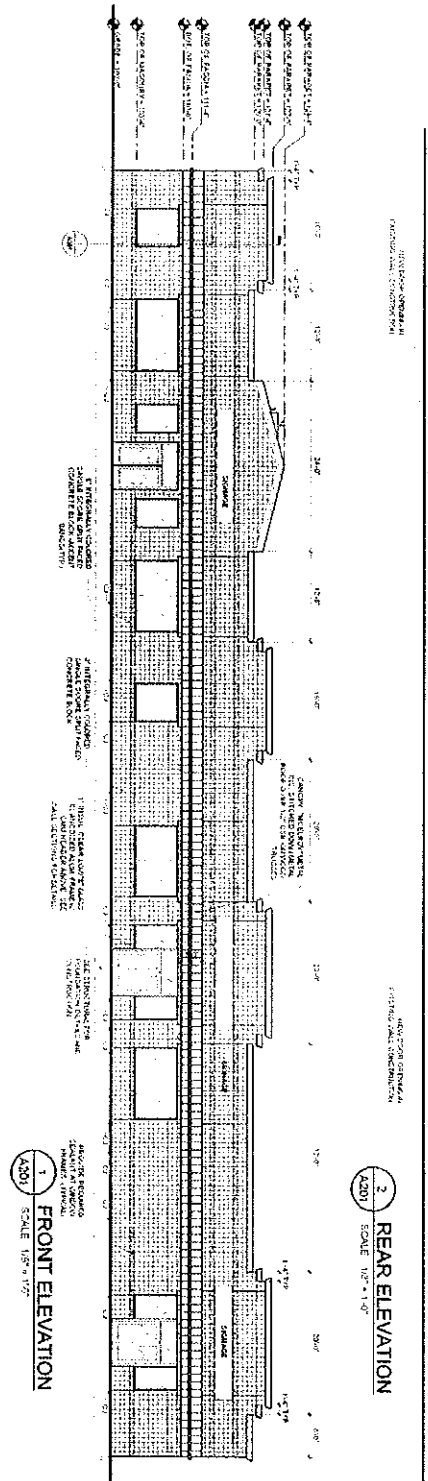
General Notes

- 1. ALL WORK SHALL BE IN ACCORDANCE WITH THE LATEST EDITIONS OF THE INTERNATIONAL BUILDING CODES AND ALL APPLICABLE LOCAL ORDINANCES.
- 2. ALL WORK SHALL BE IN ACCORDANCE WITH THE LATEST EDITIONS OF THE INTERNATIONAL MECHANICAL AND ELECTRICAL CODES AND ALL APPLICABLE LOCAL ORDINANCES.
- 3. ALL WORK SHALL BE IN ACCORDANCE WITH THE LATEST EDITIONS OF THE INTERNATIONAL PLUMBING AND MECHANICAL CODES AND ALL APPLICABLE LOCAL ORDINANCES.
- 4. ALL WORK SHALL BE IN ACCORDANCE WITH THE LATEST EDITIONS OF THE INTERNATIONAL ELECTRICAL CODES AND ALL APPLICABLE LOCAL ORDINANCES.
- 5. ALL WORK SHALL BE IN ACCORDANCE WITH THE LATEST EDITIONS OF THE INTERNATIONAL FIRE AND SAFETY CODES AND ALL APPLICABLE LOCAL ORDINANCES.
- 6. ALL WORK SHALL BE IN ACCORDANCE WITH THE LATEST EDITIONS OF THE INTERNATIONAL ENERGY EFFICIENCY CODES AND ALL APPLICABLE LOCAL ORDINANCES.
- 7. ALL WORK SHALL BE IN ACCORDANCE WITH THE LATEST EDITIONS OF THE INTERNATIONAL SUSTAINABLE DESIGN AND CONSTRUCTION CODES AND ALL APPLICABLE LOCAL ORDINANCES.
- 8. ALL WORK SHALL BE IN ACCORDANCE WITH THE LATEST EDITIONS OF THE INTERNATIONAL ACCESSIBILITY CODES AND ALL APPLICABLE LOCAL ORDINANCES.
- 9. ALL WORK SHALL BE IN ACCORDANCE WITH THE LATEST EDITIONS OF THE INTERNATIONAL SAFETY CODES AND ALL APPLICABLE LOCAL ORDINANCES.
- 10. ALL WORK SHALL BE IN ACCORDANCE WITH THE LATEST EDITIONS OF THE INTERNATIONAL QUALITY CODES AND ALL APPLICABLE LOCAL ORDINANCES.



128 West Spring Street  
Titusville, PA 16354

ARCHITECTURAL FLOOR PLAN  
A101



PROJECT: 07-25-2008  
 DRAWING: 07-25-2008  
 DATE: 07-25-2008  
 ARCHITECT: **ROCKFORD CONSTRUCTION**  
 PROJECT MANAGER: **ROCKFORD CONSTRUCTION**  
 SCALE: **A201**

**familyVideo**  
 128 West Spring Street  
 Titusville, PA 16354

**ROCKFORD CONSTRUCTION**